

IP Set to Static on HP Printers

Identify your server or computer's IP address to which your printer is connected.

Type from CMD: ipconfig /all

```
C:\Documents and Settings\philip>ipconfig /all

Windows IP Configuration

Host Name . . . . . : FBN
Primary Dns Suffix . . . . . :
Node Type . . . . . : Hybrid
IP Routing Enabled. . . . . : No
WINS Proxy Enabled. . . . . : No
DNS Suffix Search List. . . . . : home

Ethernet adapter Local Area Connection:

    Connection-specific DNS Suffix . . : home
    Description . . . . . : Broadcom NetXtreme Gigabit Ethernet
    Physical Address. . . . . : 00-24-81-95-24-4C
    Dhcp Enabled. . . . . : Yes
    Autoconfiguration Enabled . . . . . : Yes
    IP Address. . . . . : 192.168.1.4
    Subnet Mask . . . . . : 255.255.255.0
    Default Gateway . . . . . : 192.168.1.1
    DHCP Server . . . . . : 192.168.1.1
    DNS Servers . . . . . : 192.168.1.1
                          68.237.161.12
    Lease Obtained. . . . . : Sunday, May 22, 2011 2:18:33 AM
    Lease Expires . . . . . : Monday, May 23, 2011 2:18:33 AM

C:\Documents and Settings\philip>
```

Write this IP Address down and try to find one that is near it (in this case we tried 192.168.1.8) by

Find an Available IP to Set for Your Printer

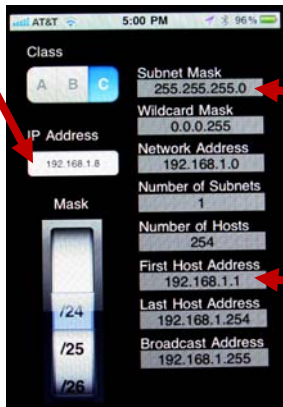
Ping numbers close to the computer's IP Address to find an available one (that doesn't answer and times out). (In this example, **192.168.1.8** was chosen)

Run: **CMD:**
Ping 192.168.1.8 (the screen says):

Pinging 192.168.1.5 with 32 bytes of data:
Request timed out.
Request times out.
Request timed out.

This means that IP 192.168.1.8 is available to use.

Enter that into an IP Calculator:



You need this **Subnet Mask** (You can get this from the ipconfig screen above – see yellow arrows)

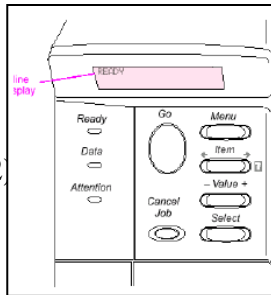
You need this as it is the **Default Gateway** (You can get this from the ipconfig screen above – see yellow arrows)

Complete the Chart Below with the information above:

HP Laser Menu Item	IP Information Type	#s
IP Byte 1	1 st IP Address set	192
IP Byte 2	2 nd IP Address set	168
IP Byte 3	3 rd IP Address set	1
IP Byte 4	4 th IP Address set	8
SM Byte 1	1 st Subnet Mask set	255
SM Byte 2	2 nd Subnet Mask set	255
SM Byte 3	3 rd Subnet Mask set	255
SM Byte 4	4 th Subnet Mask set	0
LG Byte 1	Blank	0
LG Byte 2	Blank	0
LG Byte 3	Blank	0
LG Byte 4	Blank	0
GW Byte 1 "1 st Host Address"	1 st Default Gateway set	192
GW Byte 2	2 nd Default Gateway set	168
GW Byte 3	3 rd Default Gateway set	1
GW Byte 4	4 th Default Gateway set	1
Timeout	90	90

Setting the Printer's Static IP Address

Using the **MENU**, **ITEM**, **- VALUE +** and **SELECT** buttons, Do this:



- Use the **MENU** button and scroll right until you reach **HP MIO 1 (or 2) HP EIO 1 (or 2)** appears
- Press the **ITEM** button until **CFG NETWORK = NO** appears
- Press the **PLUS or VALUE** button until **CFG NETWORK = YES** appears. (Note: this is a toggle, not permanent. Changing it to YES allows the settings to be changes *at this time only*. It will appear as CFG NETWORK = NO each time this menu is accessed.)
- Press **SELECT or RESUME**
- Press **ITEM** repeatedly until **CFG TCP/IP = NO** appears
- Press the **PLUS or VALUE** button until **CFG TCP/IP = YES** appears (Note: this is a toggle as well)
- Press **SELECT or RESUME**
- Press **ITEM** repeatedly until **BOOTP = YES** appears
- Press the **PLUS or VALUE** button until **BOOTP = NO** appears (Note: When using BootP or DHCP, keep the setting BOOTP = YES. The BootP or DHCP server will configure the TCP/IP parameters on the HP Jetdirect. No other TCP/IP configuring is necessary.)
- Press **SELECT or RESUME**
- Press **ITEM** repeatedly until **IP BYTE 1 = (value*)** appears

-
- Press the **PLUS** or **VALUE** button until the first byte # of the IP address appears (holding down the + or – will rapidly increase or decrease the number until it arrives as what you want)
 - Press **SELECT** or **RESUME** to save the value.
-
- Press **ITEM** until the next byte set shows and use the PLUS or VALUE to select the desired number, **SELECT** to save the value and **ITEM** to move to the next byte set.
 - When you've put in all the numbers on the above chart, press **SELECT** and finally **ONLINE, GO** or **MENU**.

Print out a configuration page to check the printer's IP:

-
- **MENU, (ITEM) INFORMATION MENU/ [ITEM] PRINT CONFIGURATION / (SELECT)**
-
- When all these values have been set, press the “Go” button.
 - Turn the printer off and then back on.

Connecting A Computer To That Printer

- In **Printers & Faxes**, Add a network printer
- Choose this:

